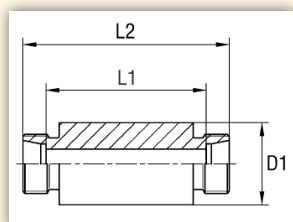


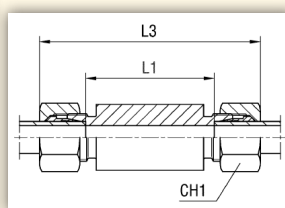
RACCORDI DIN



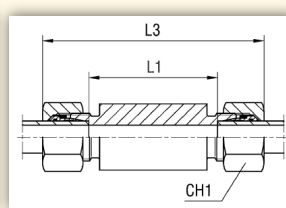
PASSANTE PARATIA - A SALDARE



TIPO: EGC1056...1 SOLO CORPO



TIPO: EGC1056... ANELLO B3



TIPO: EGC1056...4 ANELLO B4



Serie	Bar	CODICE Completo	CODICE Completo B3	Ø Tubo	Dimensioni mm					CODICE Completo B4
					L1	L2	L3	CH1	CH2	
L	315	EGC105604.1	EGC105604	6	18	56	70	85	14	EGC105604.4
		EGC105605.1	EGC105605	8	20	56	70	85	17	EGC105605.4
		EGC105606.1	EGC105606	10	22	58	72	87	19	EGC105606.4
		EGC105607.1	EGC105607	12	25	58	72	87	22	EGC105607.4
		EGC105608.1	EGC105608	15	28	70	84	100	27	EGC105608.4
		EGC105609.1	EGC105609	18	32	69	84	101	32	EGC105609.4
	160	EGC105610.1	EGC105610	22	36	73	88	105	36	EGC105610.4
		EGC105611.1	EGC105611	28	40	73	88	106	41	EGC105611.4
		EGC105612.1	EGC105612	35	50	71	92	114	50	EGC105612.4
		EGC105613.1	EGC105613	42	60	70	92	115	60	EGC105613.4
S	630	EGC105614.1	EGC105614	6	20	60	74	89	17	EGC105614.4
		EGC105615.1	EGC105615	8	22	60	74	89	19	EGC105615.4
		EGC105616.1	EGC105616	10	25	59	74	91	22	EGC105616.4
		EGC105617.1	EGC105617	12	28	59	74	91	24	EGC105617.4
		EGC105618.1	EGC105618	14	30	72	88	107	27	EGC105618.4
	400	EGC105619.1	EGC105619	16	35	71	88	107	30	EGC105619.4
		EGC105620.1	EGC105620	20	38	71	92	114	36	EGC105620.4
		EGC105621.1	EGC105621	25	45	72	96	120	46	EGC105621.4
		EGC105622.1	EGC105622	30	50	73	100	126	50	EGC105622.4
		315	EGC105623.1	EGC105623	38	60	72	104	133	60

I raccordi presenti in questa pagina sono fornibili anche in **ACCIAIO INOX AISI 316**
 Il codice cambia alla quinta cifra come nell'esempio:

EGC	10	03	07
EGC	11	03	07

> codice raccordo standard

> codice stesso raccordo in acciaio inox AISI 316

